

BONT[®]

BONT Technologies

LIQUID LEVEL INDICATOR RT180

Liquid Level Indicator

APPLICATION

RTI80 liquid level indicator (cat and mouse gauge) is a simple mechanical float operated unit which gives a clear visual indication of tank contents. The standard RTI80 indicator is suitable for atmospheric tanks, low pressure tanks, or where Necessary, to limit the emission of vapours, an optional 'oil seal unit' can be added, which will Withstand pressure up to 8.5" wg (21.2mbar).

BENEFITS

- Recommended for virtually any liquid.
- Suitable for non-metal tanks.
- Easy and quick installation.
- Low cost maintenance.
- Adaptable for floating roof or floating deck tanks.
- Sheave housing fitted with inspection cover for ease of maintenance.

PRINCIPLE OF OPERATION

Operation of the RTI80 by means of a float which moves up and down on top of the liquid inside the tank. The float is stabilized on each side by guide wires fixed to the tank base by a bracket and tensioned at the tank roof by means of special spring anchors. A cable is connected to the float, which runs through an exit pipe on top of the tank and is directed by means of special 'sheave elbows' to the indicator on the gauge board. The standard scale on the gauge board is marked off in either meters or feet with black polythene numerals on a white background (volumetric graduations are available as an option). The standard sheave elbow is cast aluminium, housing a pulley wheel, which ensures smooth operation of the indicator. The gauge board is mounted on brackets, which can be bolted or welded to the side of the tanks. The reading of the indicator denotes the tank liquid level.

INSTALLATION

RTI80 liquid indicator is supplied with a complete fixing kit that includes all necessary Pipe work, fittings, brackets and full instructions. Installation requires one 60mm diameter hole in the tank roof for the float cable and two 23mm diameter holes for the guide wire top anchors. For 'out-of -service' installations the guide wires are secured to the tank bottom on brackets, which are welded in place. For 'in-service' installations an optional anchor weight can be provided to secure the guide wires. For easy access during installation and maintenance of the float it is recommended that a RTI80 inspection hatch is installed within arms length of the float and guide wires.

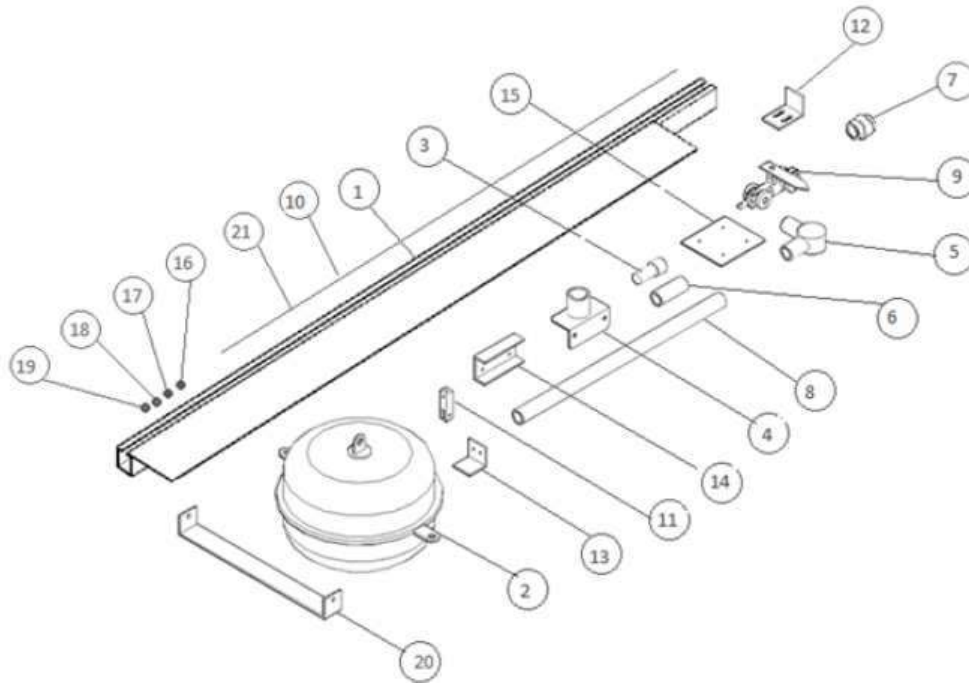
MATERIALS OF CONSTRUCTION

Standard materials of construction are shown on the drawing overleaf. Other material options are available to suit particular applications when required.

The following options are also available:

- A. Special gauge board scale
- B. Guide wire anchor weight
- C. Oil seal unit version
- D. Floating roof version
- E. Floating deck version
- F. Non-metal tank version
- G. High and low level switches
- H. Level Transmitter
- I. Level to level measurement





ITEM NO.	PART NUMBER	DESCRIPTION	QTY*
1	1000072-72	STAFF GAUGE BOARD	6
2	7000414	WEIGHTED FLOAT	1
3	7000478	CABLE TENSION ASSEMBLY	2
4	1000077	COUPLING BRACKET	1
5	7000019	SHEAVE HOUSING	2
6	1000010	1" X 3" THREADED PIPE NIPPLE	3
7	1000006	1" UNION	3
8	1000067	1" X 24" THREAD PIPE NIPPLE	1
9	7000018	TARGET	1
10	7000412	FLOAT CABLE	1
11	7000006	WIRE ROPE CLAMP	3
12	1000068	TANK BRACKET	1
13	1000089	STAFF GAUGE CLOSURE BRACKET	1
14	1000084	RULER BRACKET	2
15	1000083	TANK BRACKET EXTENSION	5
16	1000787-05-16	5/16" HEX HEAD BOLT	56
17	1000794-05	5/16" HEX NUT	14
18	1000793-05	5/16" LOCK WASHER	14
19	1000791-05	5/16" FLAT WASHER	14
20	1000720-01	WEIGHTED PLATE	1

*Item quantity changed according to indicator size.



OUR CUSTOMER REFERENCE



Distribute by,

BONT Technologies GmbH
 Salzstr. 1 21335 Lüneburg
www.bont-tech.com | info@bont-tech.com

