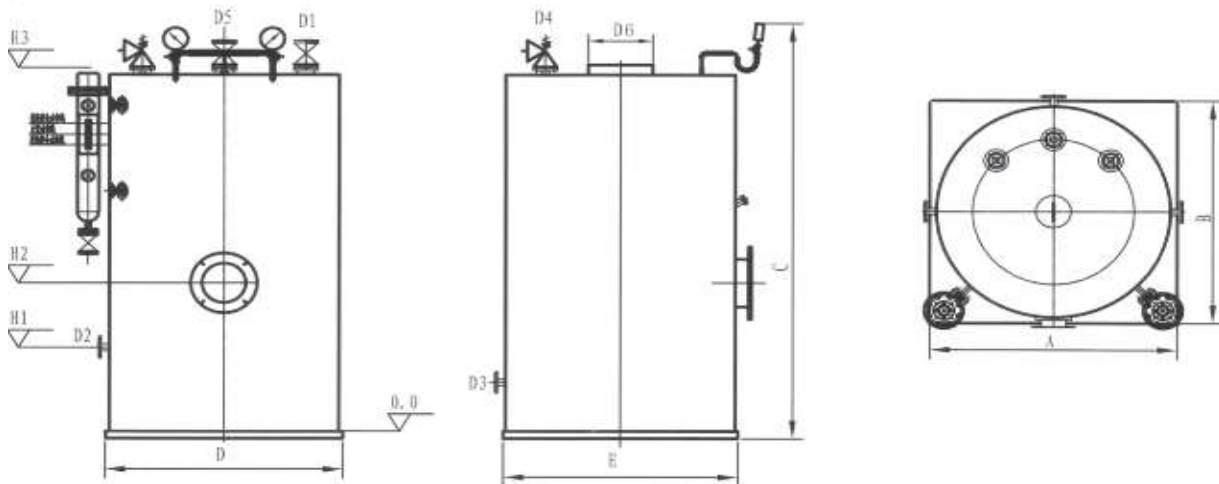


1500kg/h Oil(Gas) Steam Boiler

TECHNICAL INFORMATION

Model	SB-BT-1.5V-G	
Capacity	1500kg/h	
Working Pressure	1.0Mpa	
Working Temperature	184°C	
Feed Water Temperature	20°C	
Efficiency	94%	
Rated heat power output	1080KW	
Heat transfer area	31.33m ²	
Hydrostatic test pressure	1.5MPa	
Fuel Type	Oil (Gas) Fired	
Consumption	Diesel	120kg/h
	Natural Gas	122.9Nm ³ /h
Gas Pressure	7000pa	
Power supply	380V/50Hz	
Fan & Oil pump power	550W	
Water pump power	1.5KW	
Oil Measuring box volumn	1m ³	
Water Capacity	3400L	
Steam Outlet	DN65mm	
Feed Water Inlet	DN40mm	
Drain Valve	DN40mm	
Safety Valve	DN40*2mm	
Chimney	330mm	
Size (L*W*H)	2200*2200*3000mm	
Weight	5000kg	



*** This catalogue is for reference only.