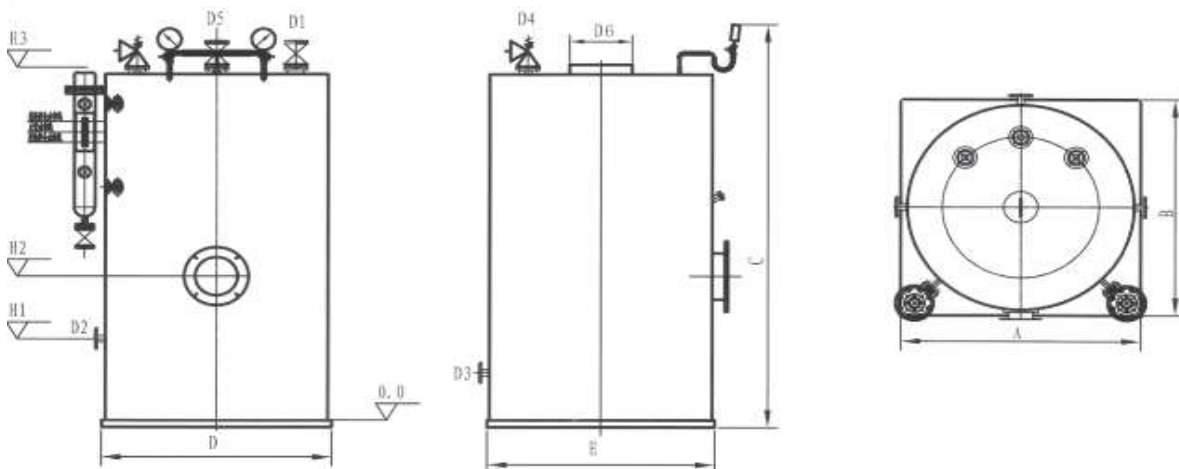


1000kg/h Oil(Gas) Steam Boiler

TECHNICAL INFORMATION

Model	SB-BT-1.0V-G	
Capacity	1000kg/h	
Working Pressure	1.0Mpa	
Working Temperature	184°C	
Feed Water Temperature	20°C	
Efficiency	94.03%	
Rated heat power output	720KW	
Heat transfer area	22m ²	
Hydrostatic test pressure	1.5MPa	
Fuel Type	Oil (Gas) Fired	
Consumption	Diesel	80.2kg/h
	Natural Gas	81.49Nm ³ /h
Gas Pressure	Natural Gas	7000pa
Power supply	380V/50Hz	
Fan & Oil pump power	370W	
Water pump power	1.1KW	
Oil Measuring box volumn	1m ³	
Water Capacity	2440L	
Steam Outlet	DN50mm	
Feed Water Inlet	DN25mm	
Vent Valve	DN25mm	
Drain Valve	DN40mm	
Safety Valve	DN40mm	
Chimney	300mm	
Size (L*W*H)	1750*1780*2680mm	
Weight	3400kg	



*** This catalogue is for reference only.